

University of Missouri
Carroll County Extension Council
2016 Annual Report



UNIVERSITY OF MISSOURI
 **Extension**
Carroll County

"UNIVERSITY OF MISSOURI EXTENSION DOES NOT DISCRIMINATE ON THE BASIS OF RACE, NATIONAL ORIGIN, SEX, SEXUAL ORIENTATION, RELIGION, AGE, DISABILITY OR STATUS AS A VIETNAM ERA VETERAN IN EMPLOYMENT OR PROGRAMS."



TABLE OF CONTENTS

Introduction

Letter from Council Chair.....3
Letter from Vice Chancellor for Extension and Engagement.....4
Carroll County Extension Leadership.....5
A snapshot of 2016 in pictures.....6

Agricultural and Natural Resources.....7-9

Carroll County 4-H.....10-13

Human Environmental Sciences.....14-15

Missouri Training Institute.....16

Continuing Education.....17-18

Carroll County Extension

Tweedie Agri-Business Forum.....19
Missouri State Fair Farm Family.....20
Leaders Honor Roll.....20

University System Impact on Carroll County.....21-22

Financial Report.....23

Faculty and Staff Serving Carroll County.....24

County Contact.....24

January 10, 2017

Dear Friends of University of Missouri Extension,

A unique partnership exists between University of Missouri Extension and local government. In Carroll County, we are proud of the many ways our partnerships with local government, organizations and coalitions have worked to improve the lives of residents in our county.

While MU Extension centers draw from the expertise found on the four University of Missouri campuses, our regional extension faculty are ingrained into our local communities. The input we receive from local citizens and the University of Missouri Extension Council provides us with the opportunity to tailor our programs to suit the specific needs and priorities of our residents. In this way, we play a vital role in not only enhancing the economic viability of the community, but in creating and sustaining healthy environments due to stronger individuals and families.

Each year, more than 1 million Missourians rely on University of Missouri Extension for research-based information and education to help them solve problems and make informed decisions. In addition to one-on-one assistance, citizens benefit from seminars, services and research-based publications.

This annual report highlights many of the programs we utilized in an effort to make a difference throughout Carroll County during 2016. It has been a privilege to serve our community and we look forward to the opportunity to continue providing resources to assist in making a positive impact in the lives of the residents of Carroll County.



Belinda Flick

Council Chairperson



Carroll County Extension Office located at
111 North Mason, Carrollton Missouri

January 5, 2017

Dear County Commissioners and Friends of MU Extension:

The past year was a busy one for University of Missouri Extension. As a long-time extension professional and newcomer to Missouri, I have found the support from people like you to be remarkable. Missouri is a special place with a promising future.

Through the efforts of faculty, staff and amazing volunteers, MU Extension connects millions of Missourians with knowledge they put into action in their daily lives. Using a range of learning experiences, we reach people of all ages and backgrounds, in every corner of the state.

In response to direct input received from local councils and the unique nature of each county, extension programs vary slightly across the state. This strength of local flexibility and public engagement enables county-based Mizzou faculty to provide local learning experiences that improve lives and community vitality. For example:

- MU Extension business specialists helped local Missouri businesses achieve sales increases of \$186 million while creating or retaining 7,766 jobs.
- Helping assure access to health care in local communities, MU Nursing Outreach made it possible for 2,094 nurses keep their skills up to date.
- Our 4-H youth development specialists and other extension team members worked with volunteers and community leaders to reach 269,000 youths ages 5 to 18 across the state.
- Anticipating the needs of Missouri's aging farm population, extension faculty developed workshops that target estate planning, succession and retirement planning specific to farmers.

These are just a few examples of how Mizzou's commitment to extension and engagement benefitted Missourians this past year.

In the interest of better serving Missourians, we are conducting a statewide needs assessment. It will include extensive input from local communities and stakeholders. It will result in stronger alignment between extension programs and local needs.

I encourage you to read the attached annual report from your county office to gain an understanding of how MU Extension has worked this past year to serve your community.

Your support of MU Extension and our efforts in your community is greatly appreciated. As always, I welcome your input on how the University of Missouri can better serve the people.

Sincerely,



Marshall Stewart, Ed.D.
Vice Chancellor for Extension

Carroll County Extension Leadership

Council Officers

Chair	Belinda Flick
Vice Chair	Diane Isaacs
Secretary	Stephanie Reid
Treasurer	Sue Lightfoot

Elected Council Members

Robert Chrisman	Town of Carrollton
Diane Isaacs	Town of Carrollton
Joe Don McGaugh	Town of Carrollton
Seth Swindler	West of Highway 65
Belinda Flick	West of Highway 65
Robert Bryant	West of Highway 65
Cody Brock	West of Highway 65
Janet Gieseke	East of Highway 65
Charlene Gibson	East of Highway 65
Jan Leakey	East of Highway 65
Stephanie Reid	East of Highway 65
Laura Owen	East of Highway 65

Appointed Council Members

Bill Boelsen	Commissioner
Paula Sprouse	MFA
Barb Lyon	Farm Bureau
Sue Lightfoot	City of Carrollton

Office Staff

Interim County Program Director	Jessica Trussell
Commercial Horticulture Specialist and County Program Director	Kathi Mecham
4-H Youth Program Associate	Carisa O'Dell
Office Manager/Bookkeeper	Lori Crawford



Peggy McGaugh, Carroll County clerk, administering the oath of office to the new Extension Council members

Strategic Plan

University of Missouri Extension's strategic plan is one of three key initiatives adopted by the University of Missouri over the past several years.

Mission *Our distinct land grant mission is to improve lives, communities and economics by producing relevant, reliable and responsive educational strategies that enhance access to the resources and research of the University of Missouri.*

Vision *University of Missouri Extension is a valued and trusted educational solution to improve the quality of life in Missouri, the nation and the world.*

Values *Respect, Responsibility, Discovery, Excellence and Engagement*

As an integral part of the land-grant mission, University of Missouri Extension is a joint venture of:

University of Missouri campuses

Lincoln University Cooperative Extension

The people of Missouri through county extension councils

Cooperative State Research, Education and Extension Service of the U.S. Department of Agriculture

Other stakeholders and partners

A snapshot of 2016 in pictures



Tim Reinbott, Assistant Director of Agricultural Experiment Station, speaking at Annual Dinner on March 3, 2016



6th Annual Tweedie Agri-Business Forum on November 17, 2016



4-H members helping during the Quail Forever seed giveaway



Bailey Minnick at the Carroll County Shoot



Jessica Trussell, interim Carroll County Program Director, introducing the speakers at the Tweedie Agri-Business Forum.



Carroll County Clover Kid Day Camp



Davin Stanley with Best in Show at the Carroll County Fair

Agricultural and Natural Resources: Horticulture Programming in Northwest Missouri

Home Horticulture and Environment
Turfgrass Management/Green Industry

Tim Baker

Horticulture Specialist

*Serving: Caldwell, Carroll, Daviess, Grundy,
Harrison, Lafayette, Livingston, Mercer,
Ray and Saline counties*



Horticulture Programming in Northwest Missouri

Horticulture Programming in Northwest Missouri Educational meetings such as the Great Plains Growers Conference in St. Joseph are offered each year. Local meetings are held as well. In 2016, the North Missouri Produce Auction in Jamesport asked Mr. Baker to update the growers on the two food safety programs: FSMA (Food Safety Modernization Act) and GAPs (Good Agricultural Practices).

(Right) As temperatures warmed in early spring, Mr. Baker kept an eye on the progression of blooms in local orchards. Unfortunately, a cold snap in early April injured fruit buds in several north Missouri orchards. This caused a reduction in the crop.



How does this work make Carroll County and Missouri Better?

When you support MU Extension's horticulture programs for commercial producers, farmers are aided in their battle with insects, diseases, and the everyday challenges of growing fruits and vegetables. Helping these growers gives Missouri citizens a source of locally-produced and nutritious food of much higher quality compared to food which has been shipped thousands of miles. More nutritious food leads to better health for everyone.



(Left) A few tomato growers complained of a "new" problem in mid-summer. It turned out to be spider mites, which can quickly turn into major pests in hot, dry weather. This is easily remedied with several insecticides.

Diagnostic Services for Homeowners and Commercial Growers - Throughout the year, the Daviess County Extension Center receives questions on horticultural questions, insect identification, weed identification, and even agronomic questions. When questions come in, Extension Specialists respond with timely, research-based information and a site visit when needed.



This pumpkin grower was concerned about the apparent lack of fruit set. When harvest was complete, it turned out better than he had originally expected.



Extension gets all sorts of objects to identify. Someone found this along a local river. It turned out to be throat teeth from a grass carp.

Agriculture and Natural Resources: Commercial Horticulture

Kathi Mecham

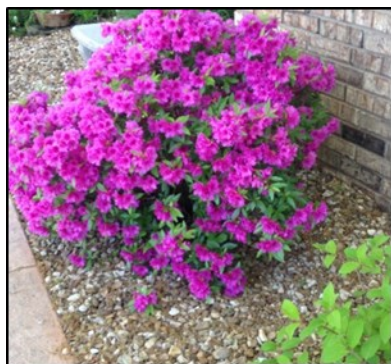
Commercial Horticulture Specialist

*Serving: Caldwell, Carroll, Lafayette,
Livingston, Ray and Saline counties*



Carroll County Extension welcomed a Commercial Horticulture Specialist and County Program Director in November of 2016. Kathi Mecham transferred to the region from Phelps County. She has experience working with the Missouri Master Gardener and Master Naturalist programs. Other programs she participated in include, Veterans to Farmers, Retail Farm and Missourians for Monarchs. Kathi's interest consist of container gardening, landscape design, horticulture and gardening for the young and the young at heart. While in the East Central region Kathi was awarded a grant to provide composters, supplies and education to four schools, two community gardens, a Head Start Program and two independent living facilities.

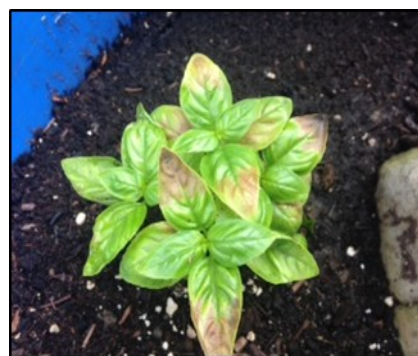
The commercial horticulture specialist will bring in the business side of the industry. Kathi owned a landscaping business before starting with extension. She will use that experience to help commercial growers. Kathi will also be available to the home horticulturist to answer questions concerning home gardens, lawns, pests and disease. She is looking forward to meeting others in the community and working together to offer horticulture programs in the county. Kathi is looking forward to working with the 4-H YPA, youth and volunteers to begin planning a garden.



Kathi worked with a customer to provide the correct nutrients and maintenance for the azalea



The right combination of annuals makes a beautiful display all season



Cool temperatures caused brown leaves on basil grown in a container. When temperatures warmed the plant thrived and the customer had plenty for their needs.

Agriculture and Natural Resources: Agronomy

Dhruba Dhakal
Agronomy Specialist

*Serving: Carroll, Chariton, Macon,
 Randolph and Saline counties*



Number of learners	What did they learn?	What action did they take?	How does this work make Carroll County and Missouri Better?
<p>Over 100 Carroll County adult learners, from listed programs:</p> <p>On-site farm visits with crop and pasture growers.</p> <p>Soil sample test result interpretations</p> <p>Insect, disease, nutrient deficiency, herbicide injury identification and diagnosis</p> <p>Private pesticide applicator training</p> <p>Over 200 hours of learning</p>	<p>Proper soil and nutrient management to increase fertilizer efficiency and protect the environment</p> <p>Introduction to Good Agriculture Practices and food safety</p> <p>Identification and control of plant diseases and insects</p> <p>Proper use of pesticides</p> <p>Benefits of cover crop</p>	<p>Used research proven crop, soil and nutrient management techniques helped producers to increase net farm economic return</p> <p>Applied nutrient to the crop/soil at proper amount and during appropriate times helped to increase crop productivity, minimize environment degradation and maximize farm profit</p> <p>Timely diagnosis of insect, disease and nutrient deficiency helped farmers to save their crops</p> <p>Adopted rotational grazing and legume inter-seeding into grass pastures increased carrying capacity of pastures, improve animal daily gain and net farm profit</p> <p>Increased farmer's knowledge and awareness to the sustainable crop and soil management practices such as cover crops</p>	<p>By utilizing research based "Good Agriculture Practices (GAPS)", crop/pasture producers in Carroll County increase net farm income/local economy by increasing their crop productivity and reducing production cost. The increased local economy in Carroll County contributes to the better Missouri State's economy.</p> <p>The increased net farm income encourages young farmers to be involved in the farm.</p> <p>Food produced through Good Agriculture Practices are high –quality, more nutritious and healthier. This ultimately leads to decreased health care cost.</p> <p>Proper amount and timely application of fertilizers and other farm-chemicals helps to minimize its use in the field. This helps to minimize the environmental degradation problems that creates better soil, water and air quality.</p> <p>Agriculture practices, for example, cover crop and no-tilling farming reduce soil erosion and improve soil health.</p>



Mr. Dhakal helped Carroll County grower Randy Daniels from Hale to diagnose pythium rot and crown rot. He visited the field and collected soil and plant root samples for testing at the MU diagnostic clinic. Cool temperatures and wet soil in May was conducive for this disease. Fungicide seed treatment are typically effective in preventing the disease.

Carroll County 4-H and Youth Development

Taylor Bryant
Regional 4-H Youth
Development Associate



Carisa O'Dell
4-H Youth Program
Associate



Number of	How does 4-H and Youth Development work make Carroll County and Missouri Better?
<p>A community of 177 youths building life skills, engaging in science and contributing to their community.</p> <p>2016 Outstanding Members:</p> <p>Kate Grant</p> <p>Emma Burns</p> <p>Kaitlyn Burns</p>	<p>One of every five Missourians between the ages of 5 and 18 participated in a MU Extension 4-H Youth Development program in 2016 4-H Youth are equipped with the knowledge, skills, attitudes and health for the 21st century workforce. Missouri 4-H members spend more of their leisure time than peers engaged in projects of interest anchored in science (Khan, 1989). It is no wonder, 4-H members are three times more likely to go into science related careers than similar peers (Lerner and Lerner, 2008). 4-H youth are more connected to college campuses and faculty than their friends. MU Extension 4-H connects 8,700 young people to University of Missouri campuses. Being on campus is a predictor of youth going onto higher education (Hoover, 2006). 4-H youth are nearly twice as likely to expect to go onto college (Lerner and Lerner, 2011).</p> <p>Youth who earn their bachelor's degree, increase annual earnings by \$2 million over their lifetime (NACUBO, 2012). If 50 percent of the Carroll County members participating in 4-H events on the MU Campus go onto earning their Bachelors, 4-H would help; young people earn \$2 million more of lifetime earnings.</p> <p>Missouri 4-H is growing future scientists. Young people in 4-H are engaged in three times more likely to be interested and pursue science-based careers their non-4-H peers. Our nation needs young people prepared to live and work in a world that no one can imagine – jobs that do not yet exist, using technology that has not been invented, solving problems that have not yet been identified. In Carroll County, 177 were engaged in science related projects and experiences.</p>

Number of learners			Program Description
	Adults	Youth	
Bosworth Fireballs	11	16	Carroll County 4-H clubs offer long-term educational experiences in which members learn life skills such as decision making, public speaking and working with others. Members learn by doing under the guidance of adult volunteers, who teach projects ranging from aerospace and arts to veterinary science and sport fishing. Clubs also involve children and teens in community service, camping and educational trips.
Chase	10	22	
Happy Hustlers	25	82	



Carroll County 4-H and Youth Development continued


Taylor Bryant
Regional 4-H Youth
Development Associate




Carisa O'Dell
4-H Youth Program
Associate



4-H Special Interest Programs

Number of learners	Program Description
16 - 4-H Summer Campers 6 - Overnight Counselors 15 - Clover Kids' Day Camp	<p>Carroll County 4-H special-interest programs include conferences, distance learning programs, day camps and other educational activities, such as school-age care. They often reach youths with special needs, such as those living in group homes or youths who are physically or mentally challenged.</p>  <p>Carroll County Camp Counselors: (Front Row) Katy Grant, Keelyne Stanley, Bethany Miller (Back Row) William Grant, Brody Stanley, Wesley Miller</p>

4-H in the Classroom—Embryology

Number of learners	What did they learn?	Program Description
52 youth participated	<p>Through the 4-H Embryology Program youth are learning about science and respect for life through direct experience with living things, their life cycles and their habitats. Pre-incubated eggs are delivered to the school where they hatch about four days later. During this time, students have the opportunity to learn the scientific process of embryology including: incubation, preparing a brooder, hatching, identifying parts of an egg and development of chicks in the egg. While students care for the eggs and chicks, they learn about sharing, decision-making leadership, responsibility, critical thinking and teamwork.</p> <p>Preschoolers exploring life cycle of chickens during the Hatching Chicks Program</p>	<p>Carroll County 4-H school enrichment programs are short-term educational experiences that supplement learning in the classroom. Teachers or 4-H volunteers lead most these programs.</p> 

Carroll County 4-H and Youth Development continued

Taylor Bryant
Regional 4-H Youth
Development Associate



Carisa O'Dell
4-H Youth Program
Associate



Number of volunteers	How does this work make Carroll County and Missouri Better?
4-H members supported by 72 youth and adult volunteers	Volunteers create, support and are part of the 4-H community. Missouri 4-H volunteers responding to a survey report they contribute on average 100 hours per year. Valuing their time at \$21.31 per hour, based on average Missouri incomes, the contribution of Carroll County 4-H volunteers was worth more than \$153,432 in 2016. More importantly, these adults serve as mentors for our youth helping them transition into healthy adulthood. Is priceless.

2016 Volunteer Recognition American Farmers Grown Community

- First year leaders:
- Kathy Lake, Richard Allen, and Nanette Fisher
- Five Year Leaders:
- Kelly Sweeney, Vickie Becker, Beth Davis, Diane Isaacs, Wade Davis, Jerome Miller and Daniel Stanley
- Ten Year Leader:
- Melissa Eiserer
- Thirty Year Leader:
- Jan Leakey



Provided by Monsanto Fund
The Grant Family

2016 Club Recognition

<p>Standard of Excellence:</p> <ul style="list-style-type: none"> • Gold- Bosworth Fireballs, Chase, and Happy Hustlers 	<p>Outstanding 4-H Secretary:</p> <ul style="list-style-type: none"> • Bosworth Fireballs, Katy Grant
<p>Service to Community:</p> <ul style="list-style-type: none"> • Bosworth Fireballs and Happy Hustlers 	<p>Outstanding 4-H Treasurer:</p> <ul style="list-style-type: none"> • Happy Hustlers, Bailey Minnick
<p>Family of the Year:</p> <ul style="list-style-type: none"> • The Burns Family 	<p>Outstanding 4-H Historian:</p> <ul style="list-style-type: none"> • Bosworth Fireballs 4-H Club

2016 Outstanding Members

Katy Grant

Emma Burns

Kaitlyn Burns

Carroll County 4-H and Youth Development continued

Taylor Bryant
Regional 4-H Youth
Development Associate



Carisa O'Dell
4-H Youth Program
Associate



Show Me Quality Assurance

Number of learners	Program Description	Participate Quotes
30 Carroll County residents participated	Programming covers information on daily care and management, reading feed labels, withdrawal times and bio-security for livestock. Also focuses on animal health products, and carcass quality. Program that leads to PQA certification.	<p>"This was the best SMQA presentation we have attended."</p> <p>"The hands on activities were very creative and helpful for each member in attendance."</p> <p>"MOM, look what I did. If you need a shot, I know how to do it!"</p>

Additional 4-H Highlights

Regional and State 4-H Attendance	11 - NW Regional Energizer	7 - State Shooting Sports
	9 - State Congress	6 - State Poultry Contest
	3 - Teen Conference	2 - State Fashion Revue
	9 - Youth Civic Leaders Summit	6 - State Fair Demonstrations



Youth Council members and Advisors attend Youth Civic Leaders Summit



Youth Council announcing award winners at Recognition Day



Carroll County 4-H Adopt-A-Highway

Human Environmental Sciences: Family Nutrition Education Program (FNEP)

FNEP provides information on nutrition, food safety and physical activity for lifelong health and fitness

Debbie Smith

Nutrition Program Associate

Serving: Carroll and Saline counties



Number of Carroll County Learners	School Districts and Agencies Served	What Did They Learn?	How Does This Make Carroll County and Missouri Better?
<p>125– Total Indirect Contacts (youth & adults)</p>	<p>Missouri Valley Community Action Agency</p> <p>In 2016, University of Missouri Extension (UME) Family Nutrition Education Programs (FNEP) provided nutrition education to low-income youth & adult participants in Carroll County.</p> <p>Nutrition Educators provide kid-friendly lessons that include taste-testing healthy foods and practicing skills that lead to good health.</p> <p>Education for adults includes nutrition, food safety, physical activity, and food budgeting.</p>	<p>Youth from Preschool to 8th grade learned through kid-friendly, hands-on lessons and activities. Activities include opportunities for taste-testing healthy foods and practicing skills that lead to good health. Education for adults also includes nutrition, food safety, and physical activity, as well as food resource management.</p>	<p>The Family Nutrition Program (FNP) brought \$8,582,289 in Federal funds to the state of Missouri. These funds were used to provide nutrition education to 951,652 food stamp recipients and food stamp eligible citizens of Missouri.</p> <p>Participants in FNP become more aware of nutrition, make healthier meal and snack choices, eat breakfast more often, are more willing to try new foods, increase their physical activity and in general make healthier food choices. Those who practice healthy eating and activity behaviors are more likely to enjoy a high quality of life as an adult and into old age. A healthy labor force is critical to attracting and keeping jobs in Missouri. In addition, this important programming effort serves to reduce healthcare costs over the participant’s lifetime, saving taxpayers money in reduced public healthcare benefits and insurance premiums.</p>

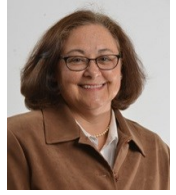


Human Environmental Sciences: Family Financial Education

Trish Savage

Family Financial Education Specialist

*Serving: Carroll, Chariton, Lafayette,
Ray and Saline counties*



Number of Carroll County Learners	What Did They Learn?	What Action Did They Take?	How Does This Work Make Carroll County and Missouri Better?
4 participants	<p>Class participants learned about:</p> <ul style="list-style-type: none"> • Writing business goals and mission statements • Effective communication techniques • Dealing with conflict • Understanding generational differences • Succession planning • Estate planning • Retirement planning 	<p>Attendees will review how their property is titled.</p> <p>They will use payable on death and transfer on death when possible to transfer their assets.</p> <p>They will discuss their estate and succession plan with their heirs.</p> <p>They will encourage their children and grandchildren to start saving for retirement.</p>	<p>When you support MU Extension’s Your Farm, Your Business, Your Future program, you prepare families to better understand how to transfer the farm or business, protect the estate’s assets, and communicate more effectively with professional advisors and heirs.</p> <p>This helps foster family communication and avoid costly litigation and aids in the continuation of the farm business.</p> <p>If families save 6 hours of legal time the value of this class is \$4500. (5 participants total at this site x \$150/hour x 6 hours) .</p>



Jerry, Baker, Clint Dougherty, Amie Schleicher, Jessica Trussell, Cindy Wells

Serving: Northwest Missouri

Number of learners	What did they learn?	What action did they take?	How does this work make Carroll County and Missouri Better?
<p>141 total learners in Northwest Missouri 10 Carroll County learners 672 hours of learning</p>	<p>Participants learned how to be a more effective supervisor. Through trainings focused on relationship building, leading effective teams, legal responsibilities, and coaching, participants gained valuable insight into being an effective leader within their organization. Additionally, participants learned the art of effective communication.</p>	<p>Participants took the skills learned in the supervisory training and applied them directly to their work environment.</p> <p>Participants became better listeners and provided appropriate feedback. They became aware of non-verbal behavior and adjusted how they act and react around employees.</p> <p>They reviewed job descriptions and policies to ensure that they were an accurate representation of job duties.</p> <p>Participants used information from generational and personality differences training to build stronger relationships with subordinates and peers as well.</p>	<p>Effective supervisors impact the success of a business or organization. Better supervisors lead to higher productivity, reduced turnover, higher employee satisfaction, and overall improved organizational health.</p>



Participant, Kerwin Brock, and facilitators, Clint Dougherty and Cindy Wells, work on a teambuilding activity

Continuing Education

Support of University of Missouri Extension's Continuing Education programs provides professional development for those serving in a variety of fields that directly impact the well-being and success of the citizens of Carroll County and Missouri, such as the Fire and Rescue Training Institute, Nursing Outreach, Law Enforcement Training Institute and Continuing Medical Education. In addition, continuing education provides multiple personal enrichment opportunities for Carroll County residents through programs such as Master Gardener, Master Naturalist and Osher Lifelong Learning Institute (courses for ages 50 and over). Quality continuing education has provided Carroll County and Missouri with highly trained and educated professionals in medical and emergency related fields and an increase in the capacity for creating and retaining businesses and quality jobs.

Fire and Rescue Training Institute (MU FRTI)

MU Extension's Fire and Rescue Training Institute (MU FRTI) provides comprehensive continuing professional education and training to Missouri's fire service and emergency response personnel. The institute has a direct impact on the well-being and protection of Missouri's 29,000 firefighters and the 6 million citizens they serve. Courses prepare firefighters for medical emergencies, hazardous materials response and disaster preparedness and mitigation, as well as fires. In FY2016, MU FRTI trained firefighters representing all 114 Missouri counties for a total enrollment of 13,828 fire and emergency responders. Student enrollment numbers rose by 6 percent in FY2016 as compared to the previous fiscal year. MU FRTI served 1,360 fire departments, organizations or agencies in FY2016.

There were 63 participants from Carroll County.

For more information, visit www.mufrti.org

Missouri Training Institute

The Missouri Training Institute provides continuing education, custom-designed training programs and consulting services for business and industry, public and nonprofit organizations and educational institutions. Training programs include subjects such as human resource management, supervision, management, leadership, team building and other business-related topics. The institute's consulting services include curriculum design, human resources, strategic planning, board development and facilitating meetings and retreats. In FY2016, 11,997 people enrolled in the institute's 421 programs

There were two participants from Carroll County.

For more information, visit mti.missouri.edu.

MU Conference Office

The MU Conference Office provides high-quality, professional, full-service meeting management for a variety of noncredit educational programs, such as conferences, workshops, seminars and symposia. Whether a meeting is hosted on campus, in out-state Missouri or anywhere in the world, the office's professional staff provides assistance to create the best learning environment for participants. In FY2016, 12,215 Missourians registered to attend MU Extension conferences for teacher education in math, science and writing; crop management, and agricultural lending, as well as statewide youth leadership programs. — FCCLA and 4-H.

There were 57 participants from Carroll County.

For more information, visit muconf.missouri.edu

Office of Continuing Medical Education and Physician Lifelong Learning (CME/PLL)

CME/PLL serves both MU Extension and the MU School of Medicine by educating physicians and other health care professionals and enhancing the standard of health care to improve the health of the people of Missouri and beyond through health education, wellness promotion and health care quality improvement/performance improvement initiatives. Additionally, CME/PLL facilitates and manages health care quality improvement projects for the University of Missouri Health Care system and the MU School of Medicine Springfield clinical campus. In FY2016, CME/PLL offered 1,879 noncredit programs, courses and educational activities with 31,779 participants.

There were two participants from Carroll County.

For more information, visit medicine.missouri.edu/cme/about

Continuing Education

MU Nursing Outreach

Keeping Missouri nurses up to date with the knowledge and skills they need to effectively

provide care and fully participate in the state's health care efforts is a primary goal for Nursing Outreach. In FY2016, Nursing Outreach helped 2,094 health care professionals participate in its programs and reached another 881 nurses through co-sponsored multidisciplinary programs. Nursing Outreach serves a predominantly rural health care audience with high-quality, affordable continuing education programs using face-to-face, web-based and online delivery methods. A full 92 percent of Nursing Outreach's Missouri participants reside outside the metropolitan St. Louis and Kansas City areas.

There was one participant from Carroll County.

For more information, visit nursingoutreach.missouri.edu

Labor Education

The MU Extension Labor Education Program works with members and leaders of a variety of workplace-based organizations across Missouri to help them develop skills to contribute to their organizations, act effectively in the workplace, and be informed and active participants in their communities. In FY2016, the Labor Education Program offered 38 courses and conferences to meet the needs of 1,007 participants. The majority of these participants are elected and appointed leaders of organizations representing the economic interests of more than 20,000 working people in Missouri and surrounding states.

For more information, visit labored/missouri.edu

Law Enforcement Training Institute (LETI)

LETI brings state-of-the-art, certified, professional training to law enforcement officers and continuing professional education to a wide spectrum of other criminal justice and public safety professionals. For more than 60 years, the institute has been the state's leader in providing vital training and education services to Missouri's 17,000 in-service personnel and police recruits annually. Working with national, state and local agencies from 31 states, LETI provided basic and advanced animal cruelty investigations training. LETI also conducted 17 armed intruder/personal safety presentations to extension personnel and council members. LETI led several presentations to civic organizations, churches and businesses throughout the state on a variety of topics, including personal safety and armed intruder response.

There were seven participants from Carroll County.

Osher Lifelong Learning Institute (OLLI)

The Osher Lifelong Learning Institute (Osher@Mizzou) appeals to the curious and intellectual world of adults 50 and better. Classes are taught by retired faculty, authors, artists and world travelers. Courses cover subjects such as religion and politics, poetry and folklore, arguments before the Supreme Court, writing your memoirs, and the 2017 solar eclipse. In addition to the broad array of classes, Osher hosts social activities and provides service opportunities for members. As the retiree population is projected to double in the next 15 years, Osher is poised to stimulate and engage the minds of seniors.

For more information, visit osher.missouri.edu

Veterinary Medical Extension and Continuing Education (VMECE)

Veterinary Medical Extension and Continuing Education (VMECE) focuses on issues that have widespread impact on Missouri veterinarians and livestock owners. Factors such as disease risks, rising input costs and increasing regulations all impact the livelihood of farming operations. The primary goal of VMECE is to provide up-to-date information and consultation to veterinarians and livestock owners so they are better prepared to address these challenges. For FY2016, VMECE provided continuing education for veterinarians seeking continuing education credit to renew their veterinary licenses. Team members also presented information about production-related topics or animal disease at more than 70 meetings across the state.

For more information, visit cvm.missouri.edu/cont-education.htm

For more information, visit leti.missouri.edu

Tweedie Agri-Business Forum

Tommy and Garnet Tweedie were avid supporters of University of Missouri Extension in Carroll County and have continued that support by providing, through their estates, annual funding for MU Extension in Carroll County. One of the ways Carroll County Extension Council has elected to use these funds is to provide an agriculture forum each year. This program is offered free of charge to farmers, producers, and all Carroll County residents. On November 19th, 2016 the Carroll County University of Missouri Extension Council held its sixth annual forum at the Rupe Community Center. The speakers were Kent Shannon, Natural Resource Engineer and Karen Funkenbusch, Project Director of the AgrAbility Project.



Kent Shannon
Natural Resource Engineer

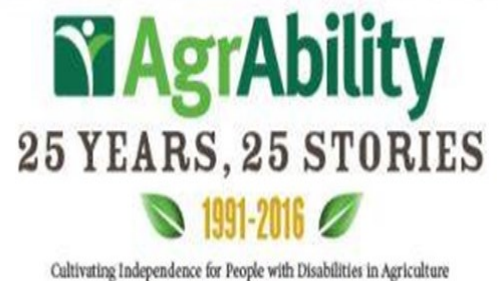
Kent has worked to educate Missouri crop producers and their advisors through on-farm research and providing training and consultation on the use of spatial data analysis software (GIS, Geographic Information System), and GPS (Global Positioning System) software and hardware. He is currently headquartered in the Boone County University of Missouri Extension office and serves as Natural Resource Engineer for the Northeast Region. His current extension education focus continues to be in technology and how it can be utilized in agriculture with a current emphasis on drone technologies.



Karen Funkenbusch
Project Director, AgrAbility Project

The Missouri AgrAbility Project is about creating success in agriculture, employment, and rural life for people with disabilities and their families. It links the Cooperative Extension Service at a land-grant university with a nonprofit disability organization to provide practical education and assistance that promotes rural independence.

Missouri AgrAbility is a statewide MU Extension program funded by USDA NIFA. The mission of AgrAbility is to assist farmers, ranchers, and other agricultural workers with disabilities or long-term health conditions by providing the resources and support they need to live independently and continue in Production.



Bank 21

Bartlett Grain Company

BTC Bank

Carroll County Trust Company

Carroll County Farm Bureau

Goppert Financial Bank (Norborne)

Home Savings & Loan Association

2016 Co-Sponsors

Missouri State Fair Farm Family



Fred and Mary Jane Phillips along with nieces Kara and Katie Berrey were among the 114 families honored during the 2016 Missouri State Fair Farm Family Day on August 15, 2016. They were selected as the Carroll County, Missouri State Fair's Farm Family by the Carroll County Extension Council and the local Farm Bureau.

Pictured in the front row are: Fred Phillips, Katie Berrey, Mary Jane Phillips, and Kara Berrey

Back row dignitaries include: Rob Kallenbach, Asst. Dean of Ag Extension, MU College of Agriculture, Food, and Natural Resources; Todd Hays, Vice President, Missouri Farm Bureau; Ted Sheppard, State Fair Commissioner; Lani Ogle, 2016 Missouri State Fair Queen; Jack Magruder, State Fair Commissioner; Barbara Hayden, State Fair Commissioner; Lloyd Wilson, Deputy Director, Missouri Department of Agriculture.

Leaders Honor Roll



The Leaders Honor Roll program is intended to honor outstanding University of Missouri Extension community leaders who have excelled in supporting or co-teaching named programs.

Shellie Craven was the recipient of the 2016 Leaders Honor Roll Award. Pictured with Carisa O'Dell, 4-H Youth Program Assistant.



Carroll County, Missouri

The County at a Glance



□ Population: 9,157

- *UM Students: 59*
- *UM Alumni: 301*
- *UM Employees: 10*
- *UM Salary & Retirement Income: \$189,893*
- *UM State Tax Revenue: \$5,330*
- *UM Federal Tax Revenue: \$25,053*

UM Students from the County in 2016

- 59 students
 - 34 - MU
 - 24 - UMKC
 - 1 - Missouri S&T
 - 53 - Undergraduates
 - 6 - Graduates
 - 32 - Full-time students
 - 27 - Part-time students

UM Employees and Retirees Residing in the County in 2016

- 10 people employed by UM
 - 7 - MU
 - 1 - UMKC
 - 2 - UM Health Care
- 4 UM Retirees and Beneficiaries

UM Alumni Residing in the County in 2016

- 301 alumni
 - 249 - MU
 - 44 - UMKC
 - 4 - Missouri S&T
 - 4 - UMSL
- 161 Selected School Alumni
 - 4 - Medicine
 - 11 - Nursing
 - 3 - Health Professions
 - 6 - Dentistry
 - 4 - Pharmacy
 - 2 - Optometry
 - 4 - Veterinary Medicine
 - 96 - Agriculture
 - 20 - Engineering
 - 11 - Law

UM Alumni Teaching K-12 in the County in 2016

- 19 teachers
- 12% of all county teachers
- 1 principal or administrator
- 9% of all county principals and administrators

UM Services Received in the County in 2016

- 689 patients seen at UM Health Care, with \$276,135 of uncompensated care.
- 11 patients seen at the UMKC School of Dentistry with an average of \$54 per patient in uncompensated care.
- 2,426 contacts with MU Extension through MU Extension events held in district counties.
- University of Missouri Health Care's Missouri Telehealth Network provided services to 76 patients at 1 site.

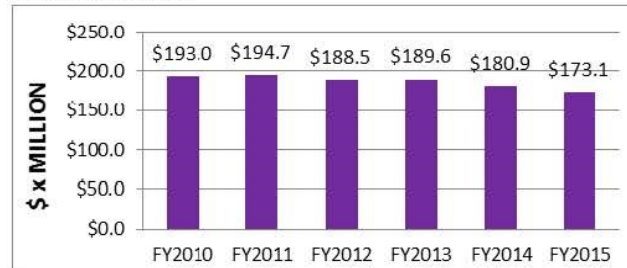
UM Footprint in the County

Carroll County MU Extension Center



Carroll County, Missouri

UM Research Expenditures Funded by Federal and Private Sources



- Between FY2010 and FY2015, UM brought in more than \$1.1 billion in federal and private research funds.

Economic Development Highlights

- With \$3.2 billion in total revenue, UM would have been the 14th largest publicly held Missouri-headquartered company in the state in 2016.
- With approximately 32,000 employees in the state, UM was Missouri's 2nd largest employer in 2016.
- In 2014, UM's \$147.7 million in federal research expenditures represented 94.5% of these expenditures at Missouri public universities.
- In 2015, UM's \$34.9 million in National Science Foundation (NSF) awards represented 84% of all NSF awards made to Missouri public universities.
- UM earned \$16.4 million in licensing income in 2016.
- UM received 184 new invention disclosures in 2016.
- 3 startups were created around UM technologies in 2016.
- UM was issued 39 U.S. patents and filed 63 new U.S. patent applications in 2016.

Electronic Services to the State in 2016

- The Missouri Research & Education Network (MOREnet) provided internet connectivity and technical services to members that include:
 - 59 higher education institutions with more than 238,000 students.
 - 521 K-12 schools serving more than 838,000 students and 75,000 faculty.
 - 121 public libraries connecting 322 library buildings that serve 5.32 million Missourians.
 - Serving the State Office of Administration, several municipalities and various other eligible organizations.
- MOREnet procured over \$20 million worth of telecommunications services from companies doing business in Missouri.

Financial Aid Provided to UM Students in 2016

- \$916.7 million provided to 58,251 total students
 - \$476.3 million (28,288 students) - MU
 - \$193.7 million (11,144 students) - UMKC
 - \$114.1 million (7,722 students) - Missouri S&T
 - \$132.6 million (11,097 students) - UMSL

Education Highlights

- UM enrolled 44.8% of first-time undergraduates attending four-year public institutions in Fall 2014.
- UM awarded 43.2% of the 1,480 Research/Scholarship Doctor's degrees earned in Missouri in 2013-2014.
- UM awarded 25.7% of the 3,252 Professional Practice Doctor's degrees earned in Missouri in 2013-2014.
- UM awarded 55.1% of the 31,016 bachelor's or higher degrees awarded by Missouri's four-year public institutions in Academic Year 2013-2014.

Supporting the University of Missouri is an investment in the future of Missouri.

The university advances Missouri citizens and communities through its mission of teaching, research, public service, and economic development across our four campuses and University of Missouri Extension.

Prepared in December 2016, based on the best available data.

Data Sources include: Missouri Office of Administration • UM IR • Office of Social and Economic Data Analysis (OSED) • Center for Applied Research and Environmental Systems (CARES) • MU • UMKC • Missouri S&T • UMSL • UM System • UM Health Care • MU Extension • US Census Bureau • US Dept of Health and Human Services • National Science Foundation

Financial Report

Carroll County Extension Center Annual Income & Expense Financial Report January through December 2016

	<u>TOTAL</u>
Income	
Student Fees	15.00
County Appropriations	21,034.99
City Appropriations	5,000.00
Tweedie Endowment	35,928.51
Resales/Education Services Fees	328.25
Miscellaneous Income	700.00
Copier Reimbursements	40.00
Rental Income	50.00
Postage Allotment	540.00
Balance Transfers	542.52
Total Income	<u>64,179.27</u>
Gross Profit	64,179.27
Expense	
Personnel Salary and Wages	20,880.00
Payroll Expenses	1,628.00
Non Payroll Salaries (4-H YPA)	19,561.41
Travel	3,925.11
Postage and Shipping	585.20
Telephone Services	2,157.49
Advertising and Marketing	131.00
Extension Promotion Activities	1,002.68
Rent/Lease Space	7,800.00
Rent/Lease Equipment	2,022.45
Publishing/Printing	36.00
Reproduction/Copy Services	-19.88
Supplies/Services	2,737.51
Program Food	209.55
Other Contract Services	30.00
Insurance	480.20
Extension Council Election Exp.	103.95
Soil Test Expenses	141.00
Publications for Resale	9.00
Total Expense	<u>63,420.67</u>
Net Income	<u>758.60</u>

State, Federal and County Funding for Extension

University of Missouri Extension programs in Carroll County are funded by Carroll County, state and federal appropriations. Local funding for support of the Carroll County Extension Center is provided by the Carroll County Commission, City of Carrollton and the Tweedie Endowment. They provide funds for office expenses, clerical salaries, Carroll County 4-H youth program associate, rent support and travel expenses of extension specialists who conduct educational programs in Carroll County.

University of Missouri's Contribution to County Extension Program

University of Missouri provides salaries and benefits for all professional and all para-professional staff members headquartered in Carroll County that are not otherwise grant or foundation covered.

The University provides in-service training expenses, including travel and lodging for staff, program support funds for secretarial benefits and matching funds for computer costs and maintenance.

Faculty and staff serving Carroll County

Staff headquartered in Carroll County

County Program Director– Interim

Human Development Jessica Trussell, Livingston
660-646-0811

County Program Director and

Commercial Horticulture Kathi Mecham
660-542-1792

4-H Youth Program Associate

Carisa O’Dell
660-542-1792

Office Manager

Lori Crawford
660-542-1792

Specialists also serving Carroll County

4-H Youth

Taylor Bryant, Saline
573-881-2775

Community Development

Bev Maltsberger, Buchanan
816-279-1691

FNP Regional Coordinator

Penny Crawford
816-632-7009

Nutrition and Health

Tracy Delaney, Lafayette
6660-584-3658

Agriculture Business

Katie Neuner, Lafayette
6660-584-3658

Family Financial Education

Trish Savage, Saline
573-881-2775

Livestock

Heather Conrow, Howard
660-248-2272

Nutrition Associate

Deborah Smith, Saline
660-886-6327

Agronomy

Dhruba Dhakal, Chariton
660-288-3239

FNP Program Manager

Constance Mowrer
816-632-7009

Natural Resources Engineer

James Crawford, Atchison
660-744-6231

Elected officials serving Carroll County

2016 Carroll County Commissioners

Presiding Commissioner	Nelson Heil
Commissioner, District #1	Bill Boelsen
Commissioner, District #2	David Martin
County Clerk	Peggy McGaugh

Carroll County Courthouse
8 South Main, Suite 6
Carrollton, MO 64633
(660) 542-0615

Missouri State Executive Officers

Governor Jay Nixon
573-751-3222

Lieutenant Governor Peter Kinder
573 -751-4727

Secretary of State Jason Kander
573-751-4936

State Auditor Nichole Galloway
573-751-4824

State Treasurer Clint Zweifel
573-751-2411

Attorney General Chris Koster
573 -751-3321

Missouri House of Representatives

Joe Don McGaugh 573-751-1468

Missouri Senate

David Pearce 573-751-2272

US House of Representatives

Sam Graves, Jr. 202-225-7041

US Senate

Roy Blunt 202-224-5721

Claire McCaskill 202-224-6154